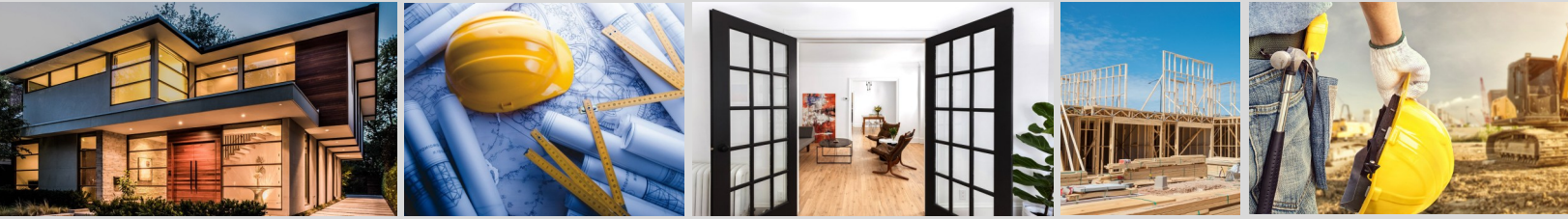


CAPABILITY STATEMENT



Company Overview

ARC Construction Management Corporation is a premier general contracting firm dedicated to delivering top-notch construction solutions across various sectors, including residential, commercial, and industrial projects. With years of industry experience and a team of skilled professionals, we pride ourselves on our unwavering commitment to quality, safety, accurate budgeting and client satisfaction.

Mission Statement

“Our mission is to deliver exceptional general contracting services that embody the highest standards of creativity, quality, safety, and professionalism.

Commitment to Excellence

As a general contractor, we are dedicated to transforming visions into reality! Our unwavering commitment to excellence drives every aspect of our work. We pledge to deliver superior construction services that meet the highest standards of quality and craftsmanship. By fostering a culture of continuous improvement and innovation, we ensure that each project is executed with precision and attention to detail. Our dedication to client satisfaction, ethical practices, and sustainable solutions underscores our promise to exceed expectations and create lasting value for our clients, partners, and communities. We take pride in building not just structures, but relationships based on trust, integrity, and mutual respect.



Ph: 833.2ARC1ST

Ph: 833.227.2178

Email: loosescrews@arc1st.com

www.arc1st.com

28364 S. Western Avenue | #357
Rancho Palos Verdes, CA 90275



NAICS Codes

NACIS 23—CONSTRUCTION

- 236116—New Multifamily Housing Construction
- 236118—Residential Remodelers
- 236210 - Industrial Building Construction
- 236220—Commercial and Building Construction
- 236117—New Housing For-sale Builders
- 236115—New Single Family Construction
- 238210—Electrical Contractors
- 238330—Flooring Contractors

SIC CODES

- 1521 | 1522 | 1542 | 1711 | 1731
- 1741 | 1742 | 1743 | 1751 | 1752



City Of Los Angeles Tax Certificate

0003011138-0001-1

TIN: 20-0596342

DUNS#: 080902744

CAGE Code: 1ST33



Ph: 833.2ARC1ST

Ph: 833.227.2178

Email: loosescrews@arc1st.com

Www.arc1st.com

Client-Centric Approach

In the past 16 years, ARC has served over 400 residential and commercial customers with a combined project portfolio of over \$27 million in construction projects. Our clients are at the heart of everything we do and by leveraging our expertise, strategic vendors and sub-contractor network we aim to provide a 100% all inclusive solution.

Community Involvement

We believe in giving back to the communities we serve. Through various initiatives and partnerships, we strive to make a positive impact and contribute to the growth and prosperity of our local communities.

Differentiators

- **Comprehensive Project Management:** Offering start-to-finish project management services that ensure every phase of the construction process is seamlessly coordinated.
- **Expertise Across Diverse Sectors:** Demonstrated proficiency in handling a wide range of projects, including residential, commercial, industrial, and community services, while showcasing versatility, adaptability and reliability.
- **Quality and Safety Commitment:** Upholding stringent quality control and safety standards to ensure the delivery of durable, high-quality structures while safeguarding the well-being of employees and stakeholders.
- **On-Time and On-Budget Delivery:** Ensuring projects are completed within the agreed timelines and budget constraints through meticulous planning and resource management.
- **Strong Vendor and Subcontractor Relationships:** A well established network of reliable vendors and subcontractors to ensure the complete and quick response to customer needs availability of quality materials and services.



Services

- **Design-Build:** Integrated design and construction services for seamless project execution.
- **Construction Services:** Full-spectrum construction services, including new builds, renovations, and expansions.
- **Pre-Construction Services:** Detailed planning and feasibility studies to ensure project success.
- **Consulting Services:** Expert advice and support for construction-related challenges.

- | | | |
|--------------------|------------|----------------------------|
| • NEW CONSTRUCTION | • INTERIOR | • ELECTRICAL |
| • RESIDENTIAL | • PLUMBING | • EXTERIOR |
| • COMMERCIAL | • CONCRETE | • HOA / COMMUNITY SERVICES |
| • INDUSTRIAL | • ROOFING | |

